

# *Vital Signs*

## **Clergy Profile**

generated from

### ***The Church Assessment Tool***

2/26/2016

*"And this is my prayer: that your love may abound more and more in knowledge and depth of insight, so that you may be able to discern what is best and may be pure and blameless until the day of Christ, filled with the fruit of righteousness that comes through Jesus Christ - to the glory and praise of God."*

Philippians 1:9-11

# Clergy Profile

## Worship-Preaching Index

The Worship-Preaching Index measures the degree of satisfaction with the Pastor/Rector's worship leadership and preaching. It tends to correlate with the Morale Index.

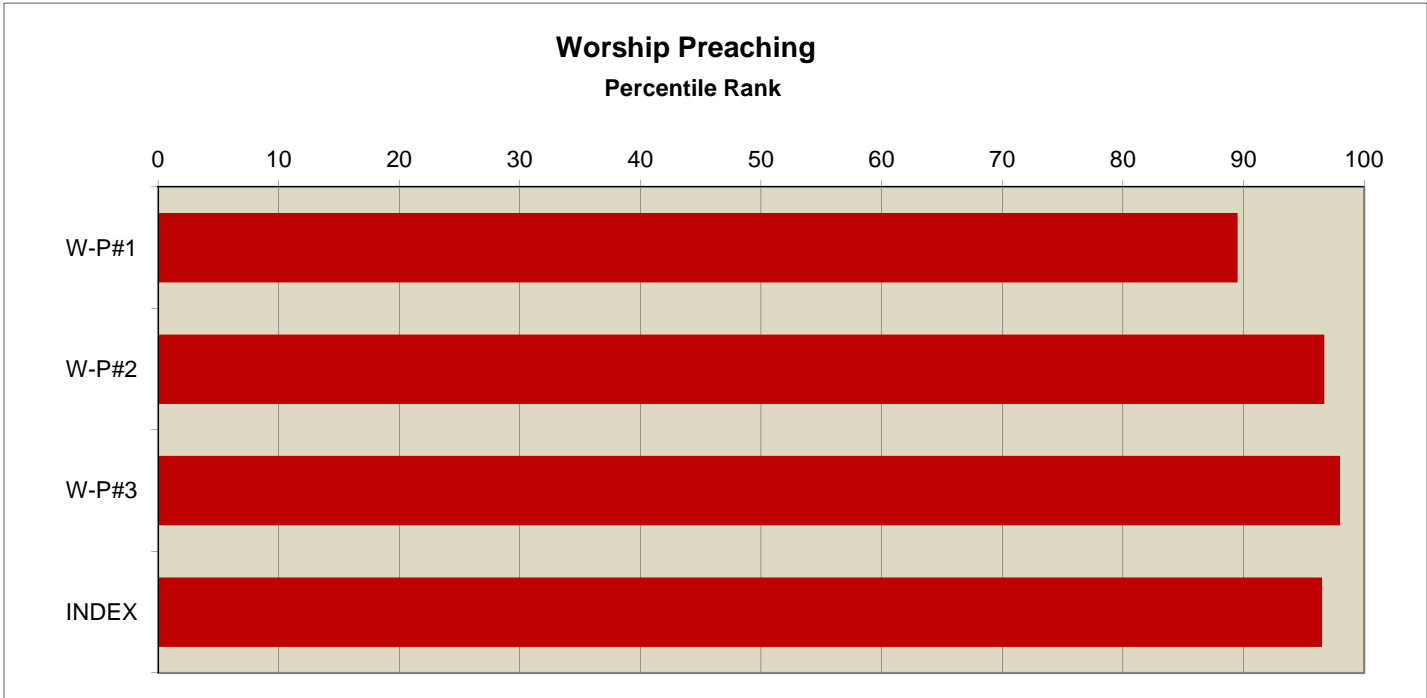
**Question Text**

- W-P#1    Our Rector presides over worship with care, engaging the people in a meaningful way.
- W-P#2    In preaching, our Rector engages people with a message that enriches their lives in the world.
- W-P#3    Our Rector preaches with integrity.

**Response Percentages (These are the scores from your congregation.)**

Question	Strongly Disagree	Disagree	Tend to Disagree	Tend to Agree	Agree	Strongly Agree
W-P#1	2.2	0.0	1.1	2.8	21.7	72.2
W-P#2	0.0	0.0	0.6	6.3	31.0	62.1
W-P#3	0.0	0.0	0.0	1.7	16.9	81.4

**Comparative Profile (These show how your scores compared with other churches.)**



# Confidential

# Clergy Profile

## Pastoral Care Index

The Pastoral Care Index measures the degree of satisfaction with the Pastor/Rector's oversight of the system of pastoral care. This includes the care provided by the various ministries of the church as well as the direct service provided by the Pastor/Rector.

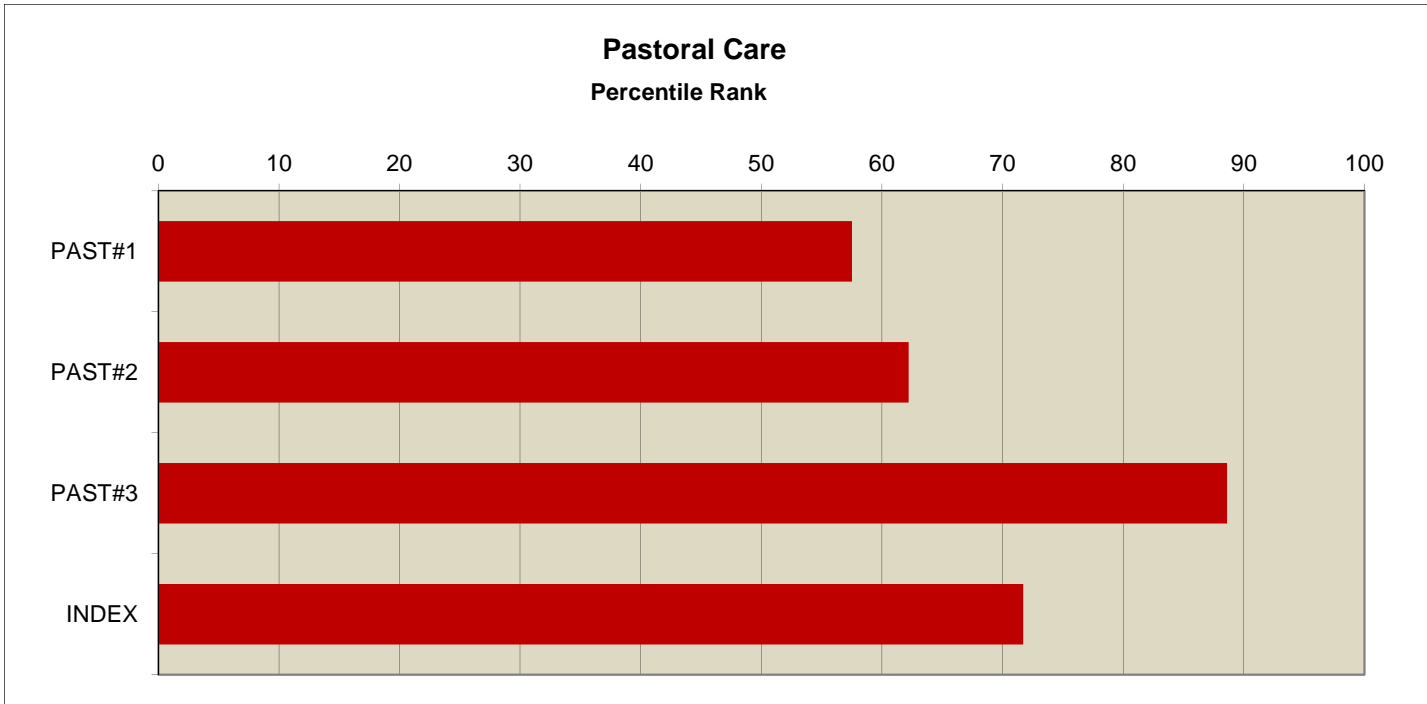
**Question text**

- PAST#1 When conversing with a person, our Rector listens for feelings, as well as words, and treats feelings as important.
- PAST#2 Our Rector has ensured the development of a plan to care for members with special needs.
- PAST#3 Our Rector is present in times of crisis.

**Response Percentages (These are the scores from your congregation.)**

Question	Strongly Disagree	Disagree	Tend to Disagree	Tend to Agree	Agree	Strongly Agree
PAST#1	1.2	1.7	2.3	16.3	39.5	39.0
PAST#2	0.0	2.8	8.5	26.4	44.3	17.9
PAST#3	0.0	0.7	0.0	7.3	30.5	61.6

**Comparative Profile (These show how your scores compared with other churches.)**



# Confidential

# Clergy Profile

## Leadership Index

The Leadership Index measures the degree of satisfaction with the leadership provided by the Pastor/Rector.

### Question Text

LEAD#1 Our Rector articulates a clear vision for our church and keeps it before the people in a compelling way.

LEAD#2 Our Rector makes things happen.

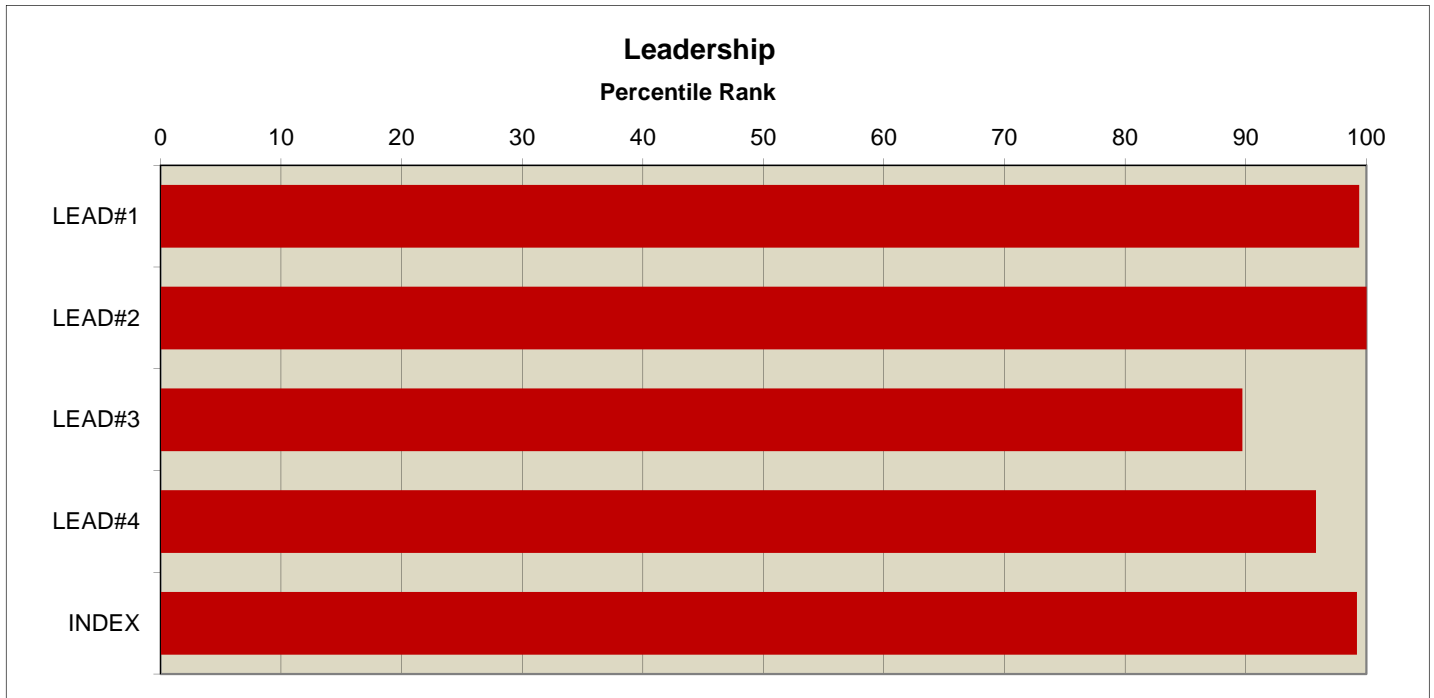
LEAD#3 Our Rector helps us accomplish our mission by bringing out the best in everyone.

LEAD#4 Our Rector communicates with people in a way that keeps us informed and connected.

Response Percentages (These are the scores from your congregation.)

Question	Strongly Disagree	Disagree	Tend to Disagree	Tend to Agree	Agree	Strongly Agree
LEAD#1	0.0	0.0	0.6	9.8	35.1	54.6
LEAD#2	0.6	0.0	0.0	5.8	22.0	71.7
LEAD#3	0.0	0.0	2.4	22.0	46.4	29.2
LEAD#4	0.6	0.0	0.6	11.2	35.9	51.8

Comparative Profile (These show how your scores compared with other churches.)



# Confidential